

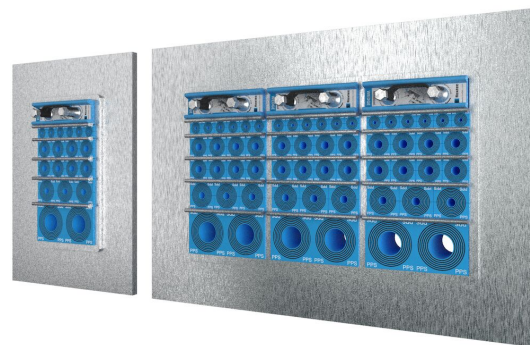


Roxtec SF gennemføring til trækrør af plast

Brandklassificeret gennemføring til trækrør.

Roxtec SF til trækrør af plast er en gennemføring til svejsning på konstruktionen, hvor der er behov for forenklet svejsning samt en brandklassificering. Den har en flange, der forhindrer rammen i at falde gennem åbningen i gulvet under svejsningen og giver et lukket og sikkert rum ved anvendelse i netop gulve. Den rektangulære stålramme giver mulighed for føring af trækrør med høj kabeltæthed. Roxtec RM PPS-tætningsmoduler til trækrør af plast er mærket med tilsvarende NW-størrelsesnummer for at forenkle monteringen. RM PPS-moduler kan kombineres med almindelige RM-moduler til en blanding af trækrør og kabler i samme ramme.

- Nem at vedligeholde og inspicere
- Har indbygget reservekapacitet



Produktegenskaber



Brandklassificeret



IP/UL NEMA

Byggekonstruktion



Metal

Monteringstype



Svejsning

Normeringer og certifikater

Brand

- E/EI-klassificering i henhold til EN 45545 E60

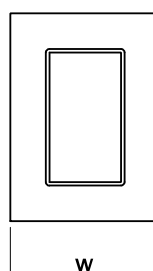
Tæthed

- IP 66/67

Rammedimensioner

mm/kg

De nedenstående rammevarianter udgør et begrænset udvalg. Du kan se hele udvalget af rammer og konfigurationer på [roxtec.com](https://www.roxtec.com).

	Titel	Rammeåbninger	Pakkearea ^ø	Udvendige mål W x H x D	Åbningsmål w x h	Vægt	Art.-nr.
	SF 6x1 ALU	1	120 x 180	260.5 x 358 x 60	201(+15/-15) x 298(+15/-15)	2.9	SFF6000000131
	SF 6x2 ALU	2	120 x 180	391 x 358 x 60	332(+15/-15) x 298(+15/-15)	4.2	SFF6000000231
	SF 6x3 ALU	3	120 x 180	521.5 x 358 x 60	462(+15/-15) x 298(+15/-15)	6	SFF6000000331
	SF 6x1 PRIMED	1	120 x 180	260.5 x 358 x 60	201(+15/-15) x 298(+15/-15)	7.6	SFF6000000112
	SF 6x2 PRIMED	2	120 x 180	391 x 358 x 60	332(+15/-15) x 298(+15/-15)	12	SFF6000000212
	SF 6x3 PRIMED	3	120 x 180	521.5 x 358 x 60	462(+15/-15) x 298(+15/-15)	16.4	SFF6000000312
	SF 6x1 AISI316	1	120 x 180	260.5 x 358 x 60	201(+15/-15) x 298(+15/-15)	8.2	SFF6000000121
	SF 6x2 AISI316	2	120 x 180	391 x 358 x 60	332(+15/-15) x 298(+15/-15)	12.2	SFF6000000221
	SF 6x3 AISI316	3	120 x 180	521.5 x 358 x 60	462(+15/-15) x 298(+15/-15)	16.6	SFF6000000321

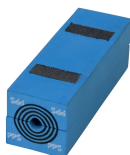


Data om tætningskomponenter

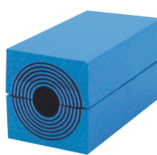
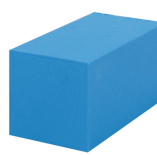
Tætningskomponenter



Lubrikant

RM PPS-modul med
Multidiameter™

wedge og wedgekit

RM-modul med
Multidiameter™RM fast
kompensationsmodul

svejeværktøjer



Stayplate

For merne information, besøg venligst [roxtec.com](https://www.roxtec.com).

The product information provided by Roxtec does not release the purchaser of the Roxtec system, or part thereof, from the obligation to independently determine the suitability of the products for the intended process, installation and/or use.

Roxtec gives no guarantee for the Roxtec system or any part thereof and assumes no liability for any loss or damage whatsoever, whether direct, indirect, consequential, loss of profit or otherwise, occurred or caused by the Roxtec systems or installations containing components not manufactured by an authorized manufacturer and/or occurred or caused by the use of the Roxtec system in a manner or for an application other than for which the Roxtec system was designed or intended.

Roxtec expressly excludes any implied warranties of merchantability and fitness for a particular purpose and all other express or implied representations and warranties provided by statute or common law. User determines suitability of the Roxtec system for intended use and assumes all risk and liability in connection therewith. In no event shall Roxtec be liable for indirect, consequential, punitive, special, exemplary or incidental damages or losses.

The Roxtec products are offered and sold in accordance with the conditions of the Roxtec General Terms of Sales. The latest version of the Roxtec General Terms of Sales can be downloaded from <https://www.roxtec.com/en/about-us/about-roxtec/general-terms-of-sales/>

We reserve the right to make changes to the product and technical information without further notice. Any errors in print or entry are no claims for indemnity. The content of this publication is the property of Roxtec International AB and is protected by copyright.

This document was generated on: 2024-04-12